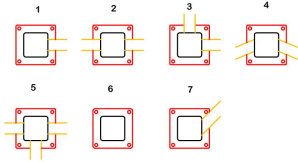
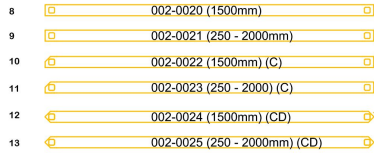


Drawing number / Rev
002_0001 C

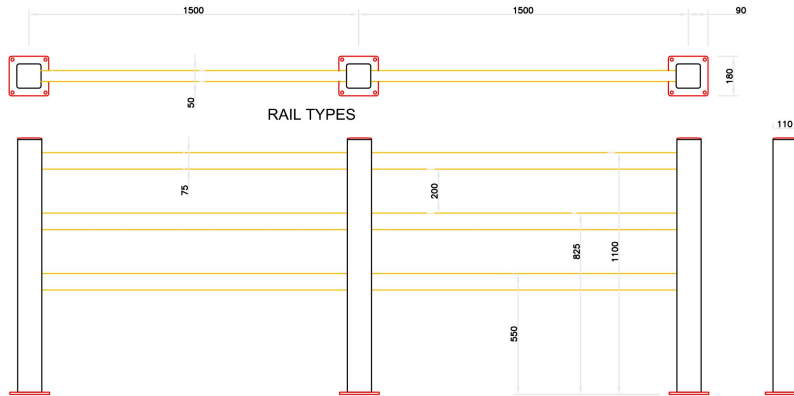
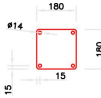
SECTION THROUGH TYPICAL POST TYPES



RAIL TYPES




RAIL TYPES



ELEVATION OF TYPICAL BARRIER

No.	Part No.	Description
1	002-0002	End Post Assembly
2	002-0003	Mid Post Assembly
3	002-0004	Corner Post 90° Assembly
4	002-0005	Corner Post 45° Assembly
5	002-0006	T Post Assembly
6	002-0007	Blank Post Assembly
7	002-0008	Corner Post 45° Assembly End
8	002-0020	Standard Rail Set 1500mm
9	002-0021	Non Std Rail Set 250 - 2000mm
10	002-0022	Std Corner Rail Set 1500mm
11	002-0023	Non Std Corner Rail Set 250 - 2000mm
12	002-0024	Std Double Corner Rail Set 1500mm
13	002-0025	Non Std Double Corner Rail Set 250 - 2000mm
14	904-0002	20 x 20 x 1105mm Locking Pin



1	Rev. Date	Purpose of revision	Drawn
			
Shay Lane, Halifax, HX3 6RL Tel:01422 344402 Fax:01422 323533			
Title			
PEDESTRIAN BARRIER			
Project			
BARRIER			
General notes			
See Notes for Material Spec			
Scale	1:20	A4	DO NOT SCALE
Date	11.01.2011		
Drawn by	ANDREW BATES		
Drawing number	002_0001	Rev	C
This document is confidential and the information contained therein, including the design principles and copyright is the property of A-Safe (UK) Ltd. The document and/or the information therein may not be used, copied or reproduced, in part or whole to any third party, or used for manufacture or other purpose without prior authority of A-Safe (UK) Ltd.			

